



The GRADUS Knowledge

Healthcare Sector

The healthcare sector is under greater strain than at any point in living memory. As a result, there has never been more need for interior solutions that allow hospitals, care homes and other facilities to function at their best. We at Gradus have a wealth of experience in creating products that enhance your healthcare building and save you money on long-term maintenance. Read on to find out how we can help.

PROTECT YOUR WALLS

Wall cladding is a robust and versatile PVC-u solution that protects walls and doors from wheeled and pedestrian traffic, reducing the need for repair and redecoration. Our smooth, easy-to-clean **SureProtect Pure**® creates an impermeable barrier to moisture and bacteria and can easily be wiped down at the end of the day, while **SureProtect Endure** is through-coloured to conceal the effects of impact and abrasion. Then there's **SureProtect Design**, which offers a bespoke printed finish to create inspiring designs that uplift any clinical environment.



SHIELD BUSY CORRIDORS

Where impact most frequently occurs, such as in main corridors and entrance areas, our **wall guards** are also a necessity. These provide robust protection to absorb and dissipate impact from trolleys, wheelchairs, beds and more – protecting both your interior and your maintenance budget. Our wall guards are also available in a **stainless-steel finish** for improved hygiene.



GUARD CORNERS



When left exposed, corners are the most vulnerable part of any building interior. Our **corner guards** provide a reinforced defence against high-impact damage from wheeled traffic, combined with shock-absorbent vinyl covers that can be easily replaced if damaged. These are available in a wide range of colours to meet the requirements of **BS8300-2:2018** for tonal contrast, as well as **stainless steel** finishes for ease of cleaning and enhanced hygiene.

REDUCE TRACKED-IN DIRT

Unless prevented from doing so, people will track endless amounts of dirt and moisture into your building, ruining your floorcoverings and lowering hygiene-levels. At entrances and access points, effective **primary barrier matting** such as **Gradus Esplanade 6000** will significantly reduce this problem, reduce slip accidents and improve the appearance and lifespan of adjacent floorcoverings.



SECONDARY BARRIER MATTING

For complete protection, installing **secondary barrier matting** within your building at circulation areas and other areas subject to soilage, such as canteens, can help prevent spillages from reaching the adjacent floorcoverings. For a **detailed guide** of where and how to specify barrier matting, [click here](#).



5-DAY MANUFACTURING

We offer a **5-day manufacturing service** for many of our barrier matting solutions, so you can have protection quickly. For more information, [click here](#).

SAFEGUARDING STAIRS

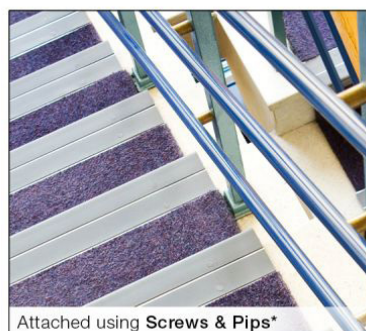
There are 100,000 injuries on stairs every year, resulting in 100 deaths. We provide the most extensive range of stair edgings in the UK, which help to reduce such accidents. Our **Gradus XT Aluminium stair edgings** offer the ultimate solution and comply with the guidance in the latest building legislation and standards. Available with a choice of **slip-resistant inserts** that extend around the leading edge of the stair edging, they ensure that foot contact is always made with the slip-resistant element of the stair edging, providing maximum safety underfoot.



SAVE ON ADHESIVE

For an ultra strong bond, install our **XT Aluminium range** with **Gradus Grip**, our solvent-free rapid curing stair edging adhesive with excellent gap filling properties. Gradus Grip saves time and money while delivering a neater and more hygienic finish, with no pips.

GRADUS GRIP REMOVES THE NEED FOR PIPS*



Attached using **Screws & Pips***



Attached using **Gradus Grip**

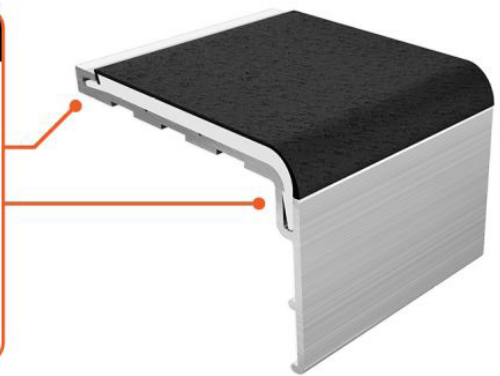
*Screwhead Cover Plugs - 'Pips'

EASIER TO CLEAN

The unique **zero-adhesive locking mechanism** of our XT Aluminium stair edgings locks the inserts in place, making them better at withstanding stringent cleaning regimes.

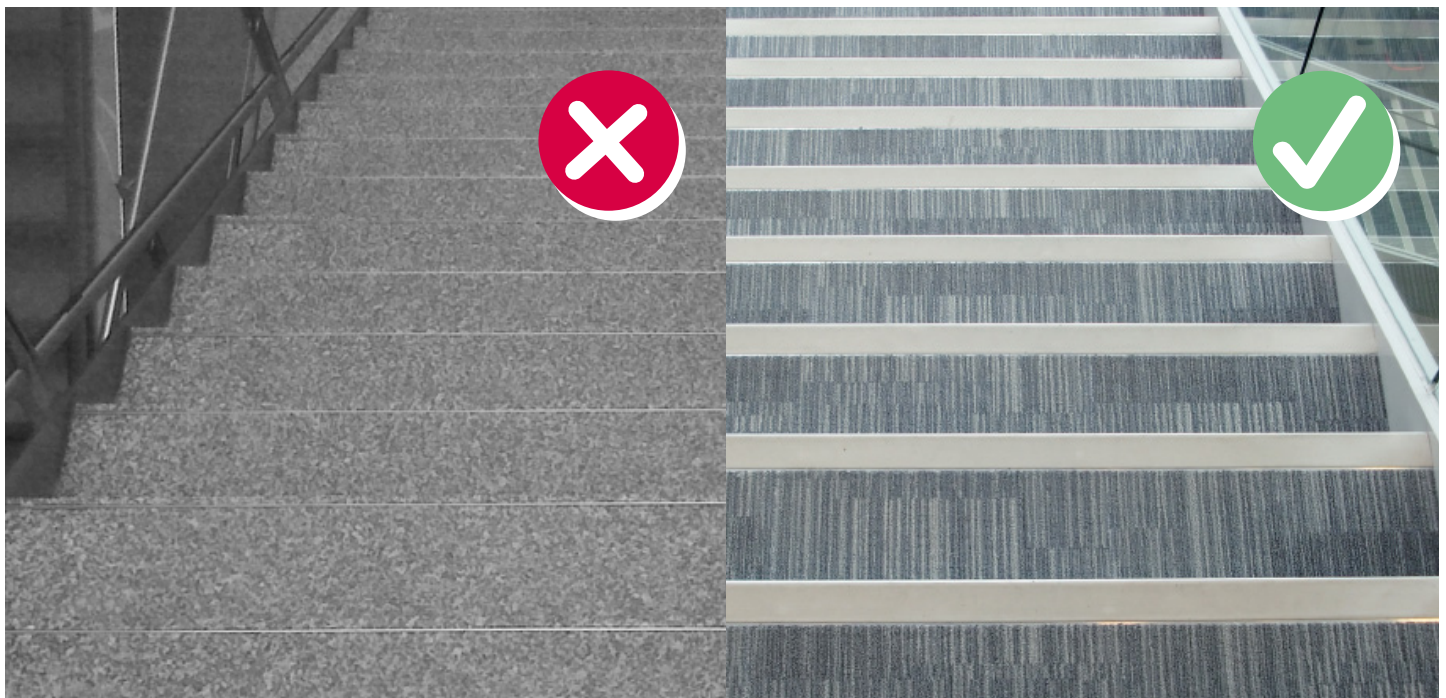
UNIQUE LOCKING MECHANISM

- ✓ Secures the insert in place.
- ✓ Ideal for environments where more intensive cleaning is required such as healthcare or education.



CONTRAST IS KEY

It is recommended that there is at least a **30 point difference** between the Light Reflectance Value (LRV) of the stair nosing and floorcovering to achieve a suitable contrast. To find out more about why this is vital, see page 10 of **The Gradus Knowledge – Stair Safety Series**.



DEMENTIA

When selecting interior solutions for buildings used by people with **dementia**, such as **care homes**, special consideration is required. This is because what may look 'normal' to you can potentially disorientate them, causing distress or injury. Find out more by checking out our 'See Through Their Eyes' campaign around the issue of designing for dementia: x.



THE GRANGE HOSPITAL

We recently supplied and fitted a range of solutions at **The Grange University Hospital** in Wales. SureProtect Design wall cladding was used in a bespoke printed finish throughout the project to create a feeling of well-being and a positive environment. What do you think? Read more about the project **here**.



NOT SURE WHERE TO START?

We've got decades of experience that enables us to provide **expert advice** that work for all facilities and budgets. Call us today on **01625 428922** to request your **free building health check**.

GRADUS *Wall Protection*

**Keep Your
Healthcare
Building
Living
Longer**

Health Check

NEED A SAMPLE FIRST?

Delivery of samples is available to wherever you are. Get in touch to **order a sample**.

GET IN TOUCH

Like what you see?
Call **01625 428922** or visit our website at **www.gradus.com**